



Trimble Groundworks

# Machine Control System

Optimize production and revenue for drilling, piling and compaction operations





## Benefits:

- Stakeless navigation and minimal layout reduces workload, rework and errors
- Improve site safety with avoidance zone alerts to reduce the need for personnel near machines
- Auto Stop drills only to the defined elevation
- 2D workflows enable you to keep working in the event of a loss of GNSS signal
- In-field drill plan and quality/production reports
- Limit operator fatigue by reducing paperwork
- Very high accuracy and precision using RTK positioning, accurate to 0.02"
- Navigation to inclined or vertical holes/piles from any direction delivers flexible workflow for the operator
- Log as-built data during operation to keep track of projects
- Require fewer site visits with optional Wi-Fi or cellular data-sync back to the office
- Optimize drill plans for better fragmentation

## Stay on target for more profit

Trimble Groundworks enhances worksite safety, accuracy and the efficiency of your drilling, piling or compaction operations. All day, every day, in any weather.

Realize maximum production and revenue with the Trimble® Groundworks Machine Control System—an aftermarket, land-based, 2D/3D drilling and piling system for the mixed fleet operator.

Rugged Trimble VERSO 12 Display

Clearly see avoidance zones for safer worksites



Easy to use, intuitive interface

Configurable views





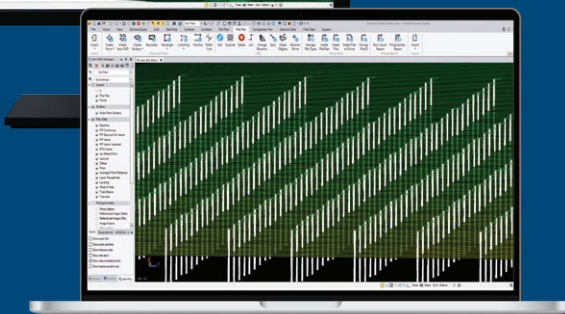
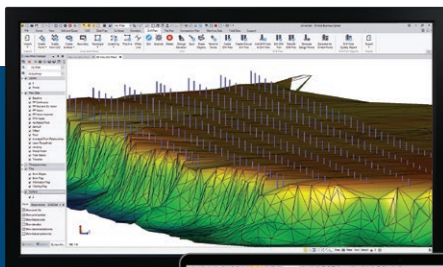
## Applications

- Drilling
- Piling
- Solar farm construction
- Blast hole drilling
- Structural piling
- Wick drain installation
- Continuous flight augering (CFA)/auger cast piling
- Anchor/monopile drilling
- Dynamic compaction

## Connected Construction

Trimble Groundworks is an integrated solution that brings the office and the field together to give you less rework, more productivity, and best of all—more profitability.

- Trimble Business Center creates and manages design data to avoid costly mistakes
- Trimble Groundworks gathers as-built data so Trimble Business Center can generate accurate quality, production, and utilization reports
- Trimble WorksManager Software makes it easy to manage up-to-date connected design data and track all of your fleet assets across multiple project sites

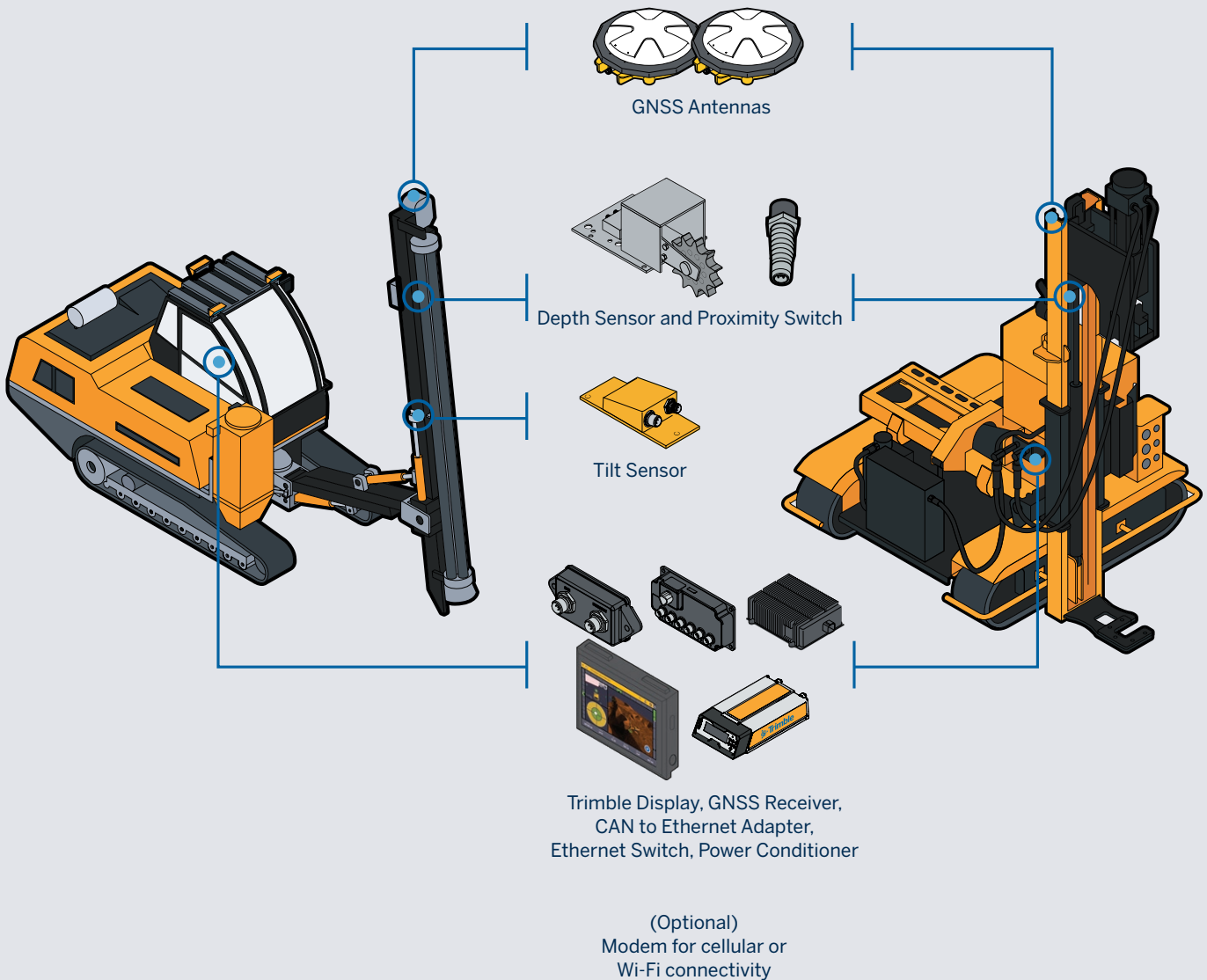


## Office software: Trimble Business Center

Rapidly create optimized 3D drill and piling plans with Trimble Business Center, then generate comprehensive quality and production reports. With Trimble Business Center and Trimble Groundworks, more profits are at your fingertips.

# How it works

Trimble Groundworks comes complete with reliable hardware certified tough enough to withstand the shock and vibration of drilling machines, and easy-to-use software.



Trimble Civil Construction  
10368 Westmoor Drive  
Westminster, Colorado 80021 USA  
construction\_news@trimble.com

© 2020-2023 Trimble Inc. All rights reserved. Trimble, the Globe & Triangle logo are trademarks of Trimble Inc, registered in the United States and other countries. All other trademarks are the property of their respective owners. PN 022482-4219B (06/23)

