

SITECH® SmartGuide & Go

YOUR STEP-BY-STEP GUIDE TO GETTING THE MOST FROM TRIMBLE TECHNOLOGY.

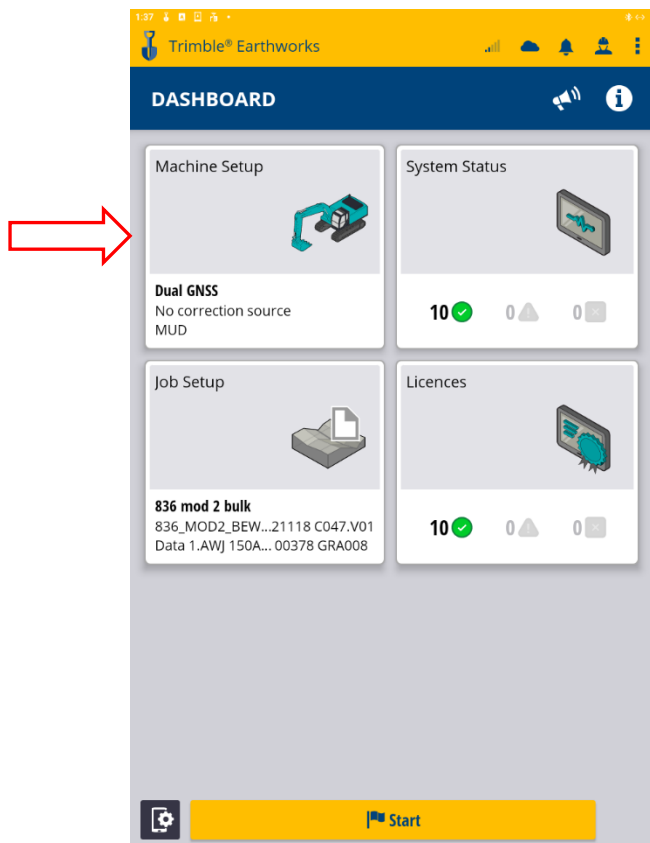
MARCH 2025

TRIMBLE EARTHWORKS FAQ: Adding a Correction Source

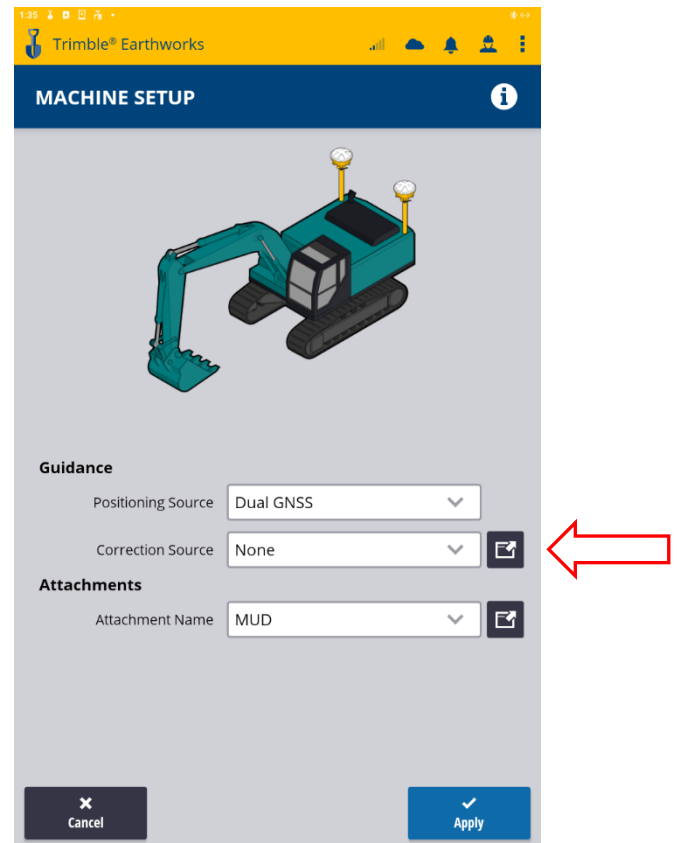
Welcome to **SITECH SmartGuide & Go** – your go-to resource for quick, clear, and step-by-step guidance on using Trimble technology with confidence. This series is designed to help you navigate common setup tasks, optimise performance, and get the most out of your equipment—without needing to call support.

In this guide, we'll walk you through **Adding a Correction Source in Trimble Earthworks**, with easy-to-follow instructions to ensure you're up and running in no time.

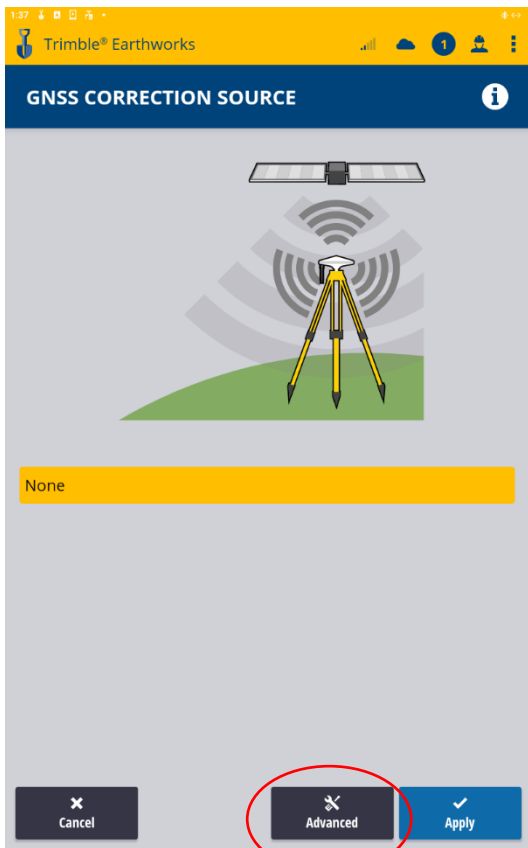
1. Select **Machine Setup** tile



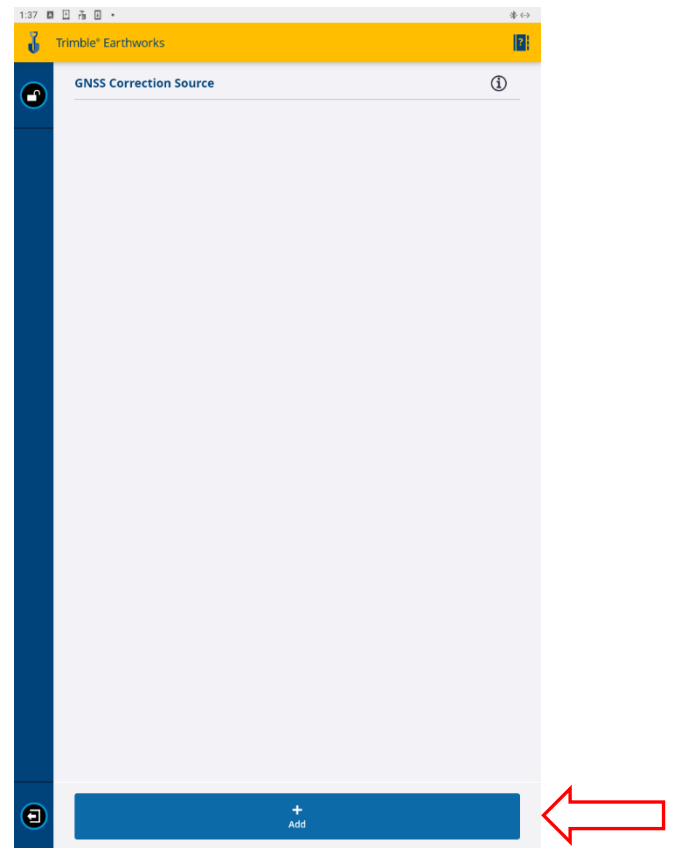
2. Select **Edit** Correction Source



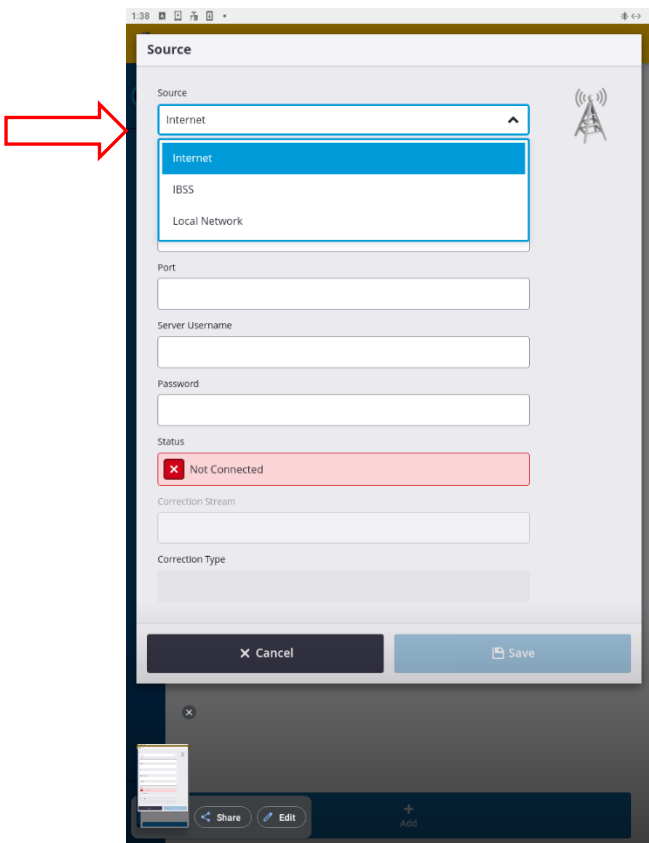
3. Select **Advanced** icon



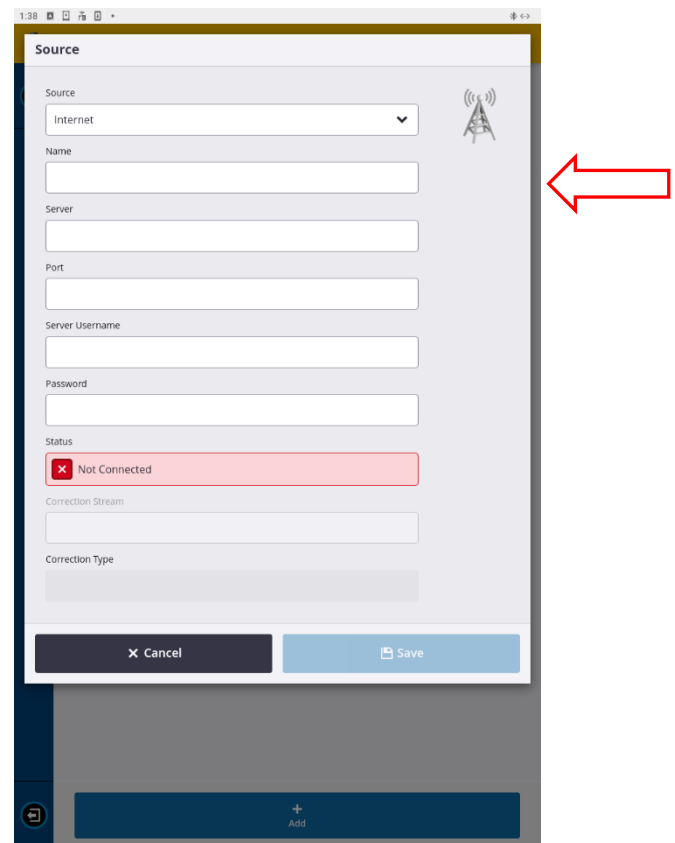
4. Select **+Add**



5. Drop **Source**, select **Internet**



6. Create name add VRS licence details



Note: VRS Correction licence can be purchased through your SITECH dealer

Source: Internet
Name: SITECH TEST
Server: VRSNOW.COM.AU
Port: 2101
Server Username: SITECHR1
Password: *****
Status: Not Connected
Correction Stream: [Empty]

7. Select **refresh**

Source: Internet
Name: SITECH TEST
Server: VRSNOW.COM.AU
Port: 2101
Server Username: SITECHR1
Password: *****
Status: Not Connected
Correction Stream: [Empty]

8. Select **Mount Point**

Source: Internet
Name: SITECH TEST
Server: VRSNOW.COM.AU
Port: 2101
Server Username: SITECHR1
Password: *****
Status: Connected and receiving data
Correction Stream: TVN_NEAREST_CMR_PLUS
TVN_NEAREST_CMR_X
TVN_NEAREST_RTCM_31
TVN_CMR_X
TVN_RTCM_31
20_TVN_CMR_PLUS

9. Select **Save**

Source

Source: Internet

Name: SITECH TEST

Server: VRSNOW.COM.AU

Port: 2101

Server Username: SITECHR1

Password:

Status: Connected and receiving data

Correction Stream: 20_TV_N_CM_R_X

Correction Type: CMRx

10. Check status is **Connected**

GNSS Correction Source

SITECH TEST

Source: Internet

Server: VRSNOW.COM.AU

Stream: 20_TV_N_CM_R_X

Status: Connected and receiving data

11. Select **exit** web interface app.

GNSS Correction Source

SITECH TEST

Source: Internet

Server: VRSNOW.COM.AU

Stream: 20_TV_N_CM_R_X

Status: Connected and receiving data

12. Select **Source Name** then **APPLY**

MACHINE SETUP

Guidance

Positioning Source: Dual GNSS

Correction Source: SITECH TEST

Attachments

Attachment Name: GP

